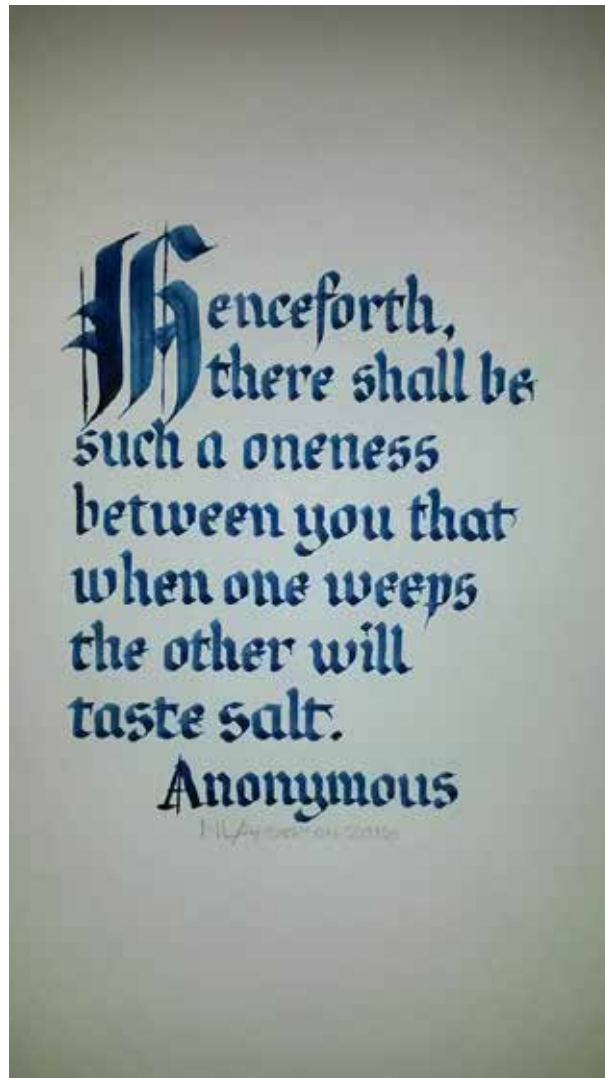


# LETTERNEWS

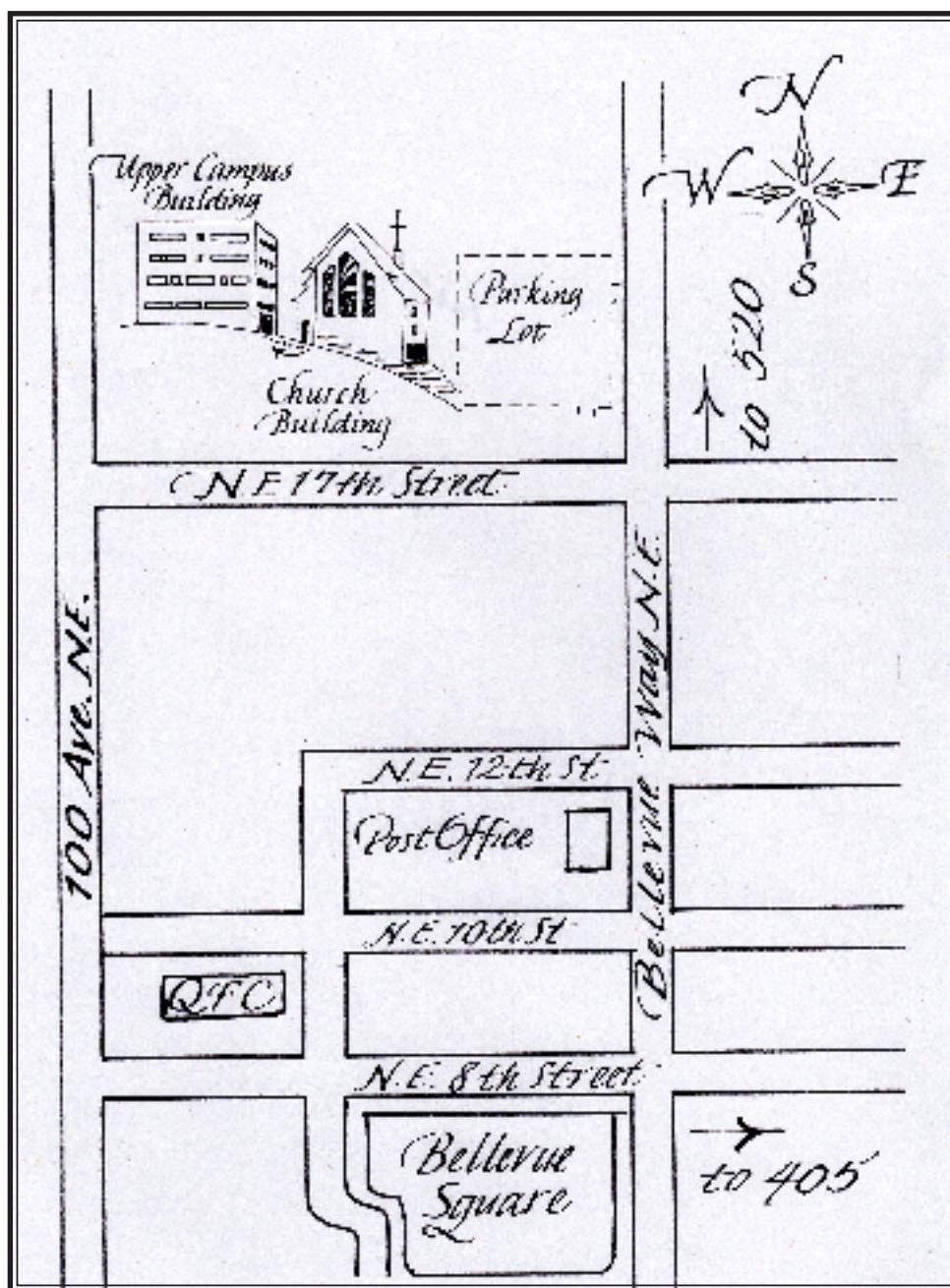
*The Society for Calligraphy & Handwriting*



*"Marriage" by Nancy Anderson*

**Fall 2016**

Monthly Meeting Location: First Presbyterian Church of Bellevue  
1717 Bellevue Way NE, Bellevue, Washington 98004 (425) 454-2853



Directions:  
From I 405, take the NE 8th St Exit westbound; go west on NE 8th until you get to Bellevue Way, and turn right. Proceed down Bellevue Way to just past 17th St, where there is a left turn lane. The entrance to the church parking lot is on the left. The meeting is in Room 105 in the Upper Campus building. There will be signs to direct you.

Photographs this issue: Nancy Anderson, Laura Blaine, Lisa Leong-Tsang, Kathy Barker, Linda Hildesheim and Nan Robkin

Website: <http://calligraphysociety.org/>



## September 15 Meeting: Ruling Pen with Kathy Barker

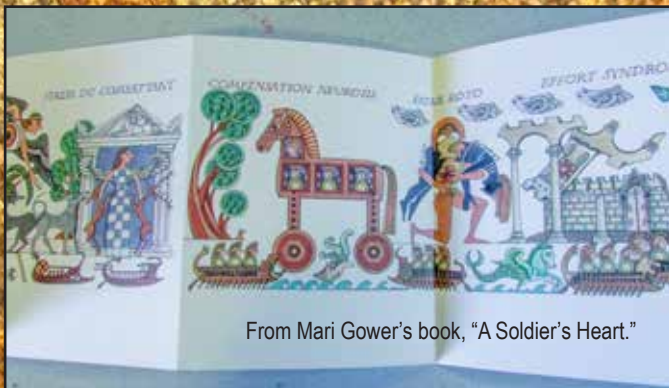
With its traditional origins as a drafting tool, the ruling pen and its humble cousin, the folded pen, have become one of the most innovative and creative tools for the modern calligrapher. Come to our first meeting of the fall season and learn a simple alphabet, try a variety of tools, and learn how expressive this tool can be. We will also explore adding watercolor washes for further creative opportunities. Alphabet exemplars, samples of styles, and guide sheets will be provided.

Please bring: paper for experimentation (white copy paper is fine); writing fluid of your choice (walnut ink, black sumi or Higgins Eternal work well); any ruling pen, folded pen, Luthis, **that you may already own (extra pens to try will be in abundance.)**

\$2.00 fee to cover copy costs and extra paper, etc.



## October 20 Meeting: "Waiting for the words: navigating the gaps between exploration and chaos." with Mari Gower



Mari will talk about her process and how, after the research stage, she lets the visual images unfold; leaving spaces for the words to come (and on every project she is always terrified that, this time no words will come to her). Her example will be "Cupid & Psyche" commissioned by the University of Washington, for which she kept a relatively coherent notebook with research notes & sketches.

## November 17 Meeting: Pointed Brush with Kellie Moeller

Learn a quick version of the brush alphabet and master a small calligraphy/collage project in just 2 hours. Meet new friends or bring your pen pals to learn the basics of pointed brush calligraphy with Kellie Moeller, Bothell Artist and Calligrapher. Experience the magic of Tengucho rice paper with collage and brush lettering.

Supply List:

1. Pentel Color Brush or other favorite brush pen. Kellie's favorite is the Pentel Fude Brush that can be purchased on line here: [https://www.amazon.com/gp/product/B000THNGVO/ref=oh\\_aui\\_detailpage\\_o03\\_s00?ie=UTF8&psc=1](https://www.amazon.com/gp/product/B000THNGVO/ref=oh_aui_detailpage_o03_s00?ie=UTF8&psc=1) for \$5.48 plus postage.
2. Bond or favorite practice pad
3. \$3.00 fee for handouts and project materials.

